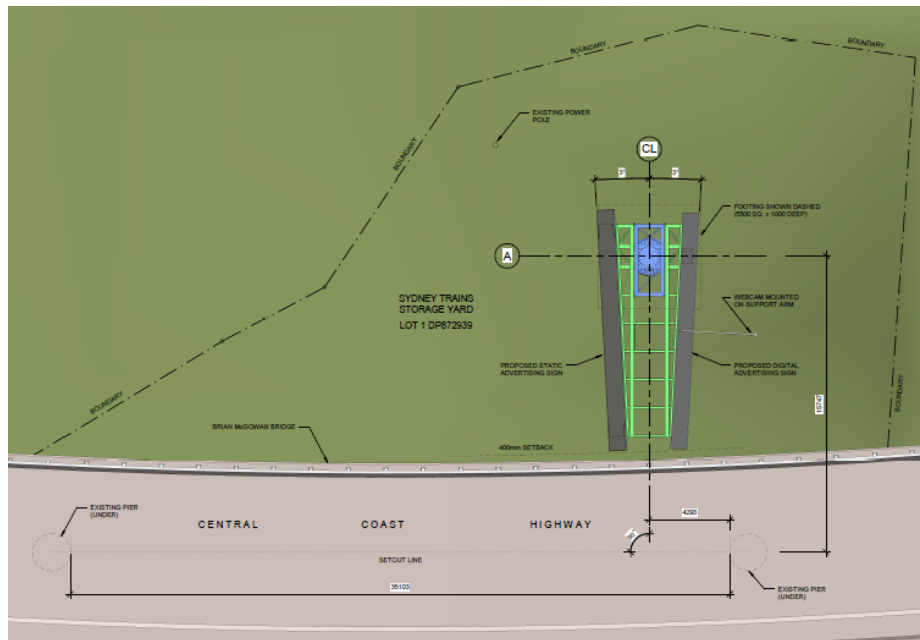


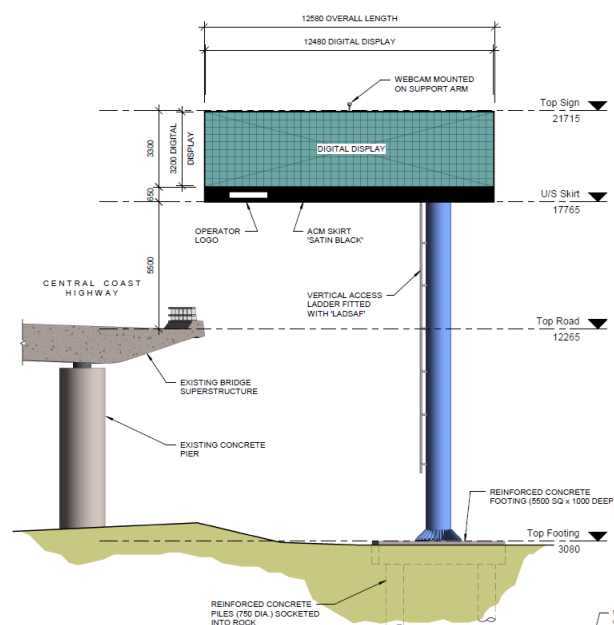
Introduction and Scope of Works: REV1- 20-02-2023

Scope of works:

Within the rail corridor adjacent to the tracks at Gosford. The advertising sign is proposed to be installed on a monopole sign with dual frontages. The monopole is anchored into the ground via a reinforced concrete pad footing (subject to future specification by structural design).



The proposed sign boards will be powered from a new 3 phase supply from a new LV pillar located outside the rail boundary fence adjacent to Pacific Hwy. The sign board's LV board is supplied via a 55kVA isolation transformer located adjacent to the new LV pillar

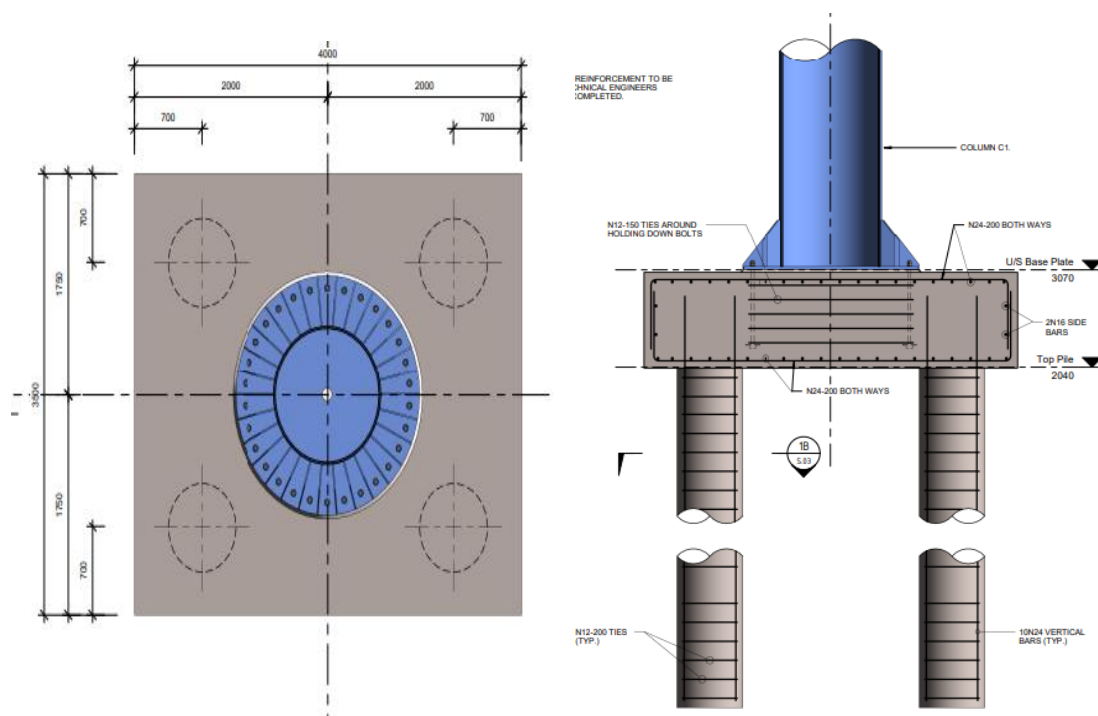


Methodology of Works:

Installation sequence

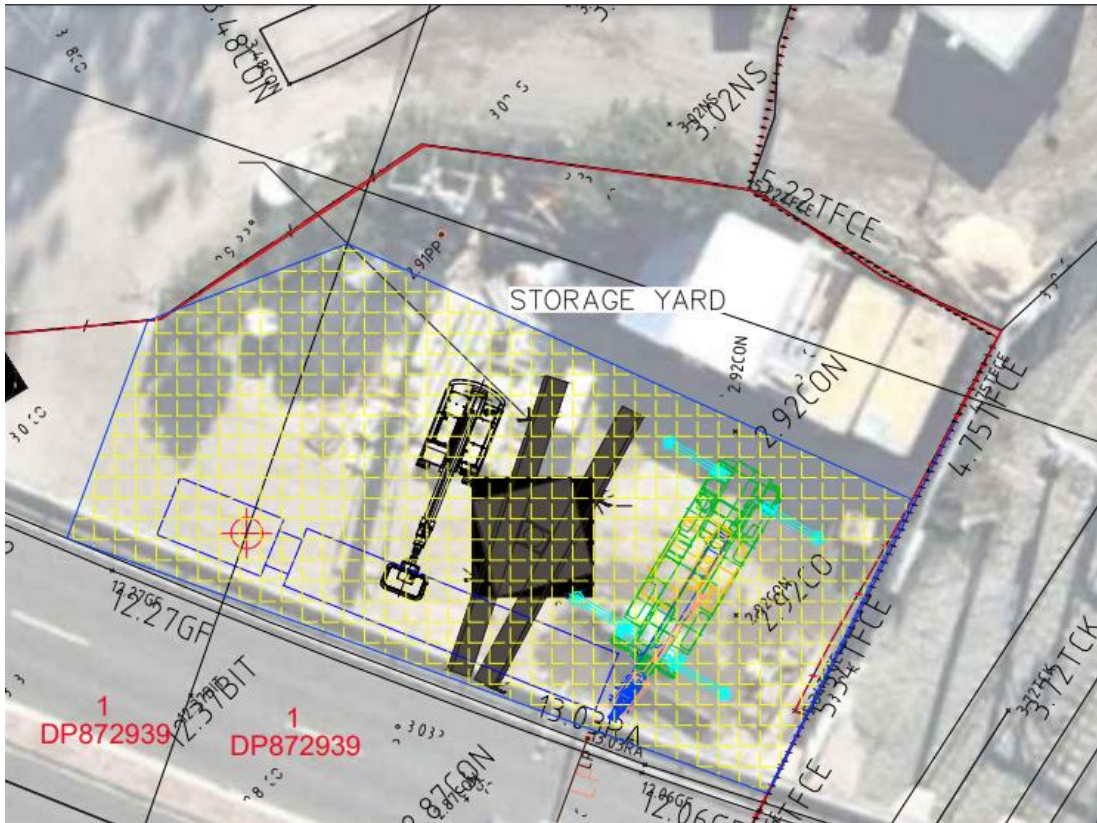
Civil works and footing

- Civil work to be completed during the day within the boundary fences of the storage yard
- Work Hours: 7am to 5pm Monday - Saturday (depending on site access)
- Any work to be undertaken outside of these hours to have permission of Sydney Trains with reasonable notice given to site contact
- All works for excavation, placement reinforcement, formwork and concrete to be completed within storage yard.
- Cutting of existing concrete required for installation of new sign footing

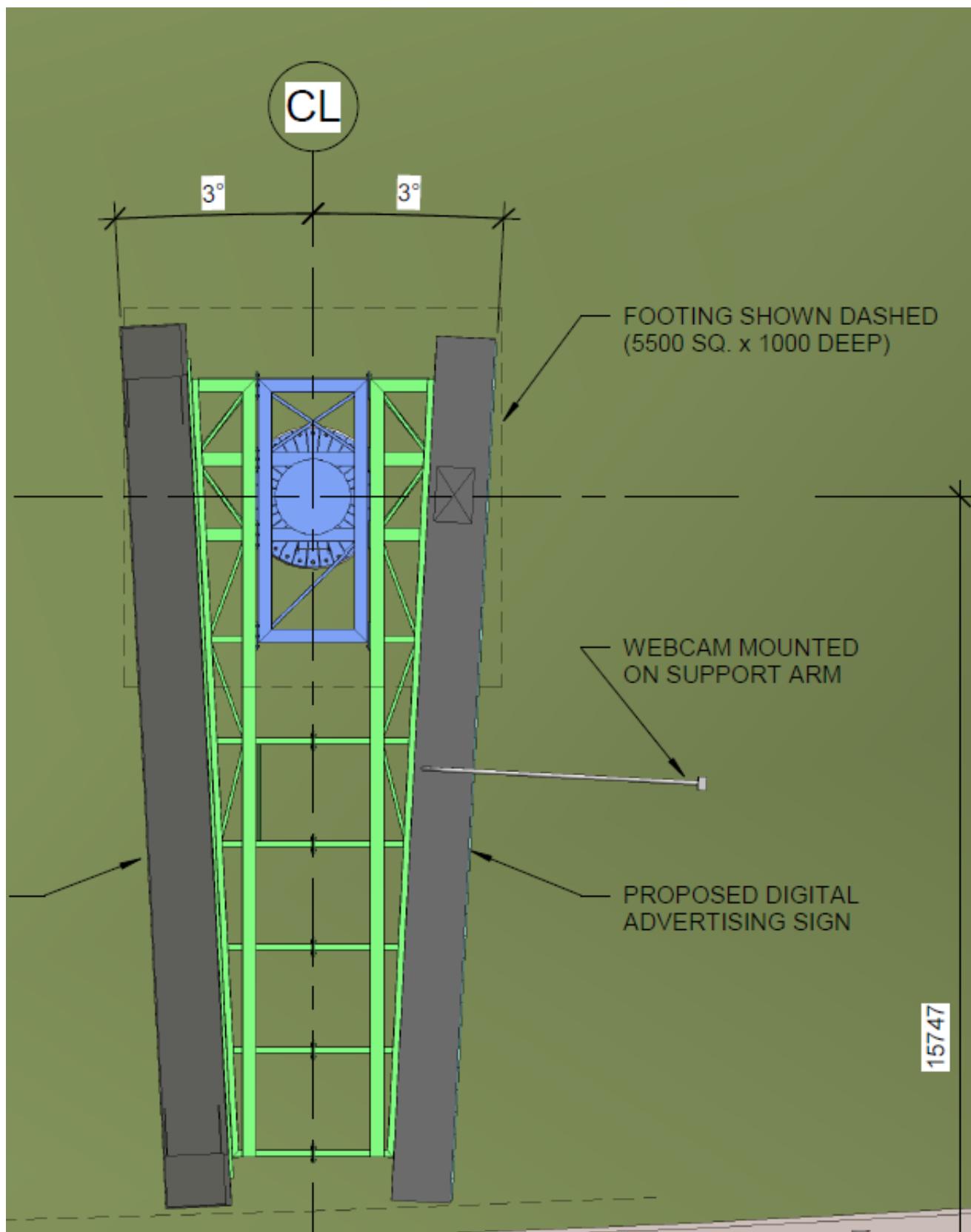


Structural steel installation

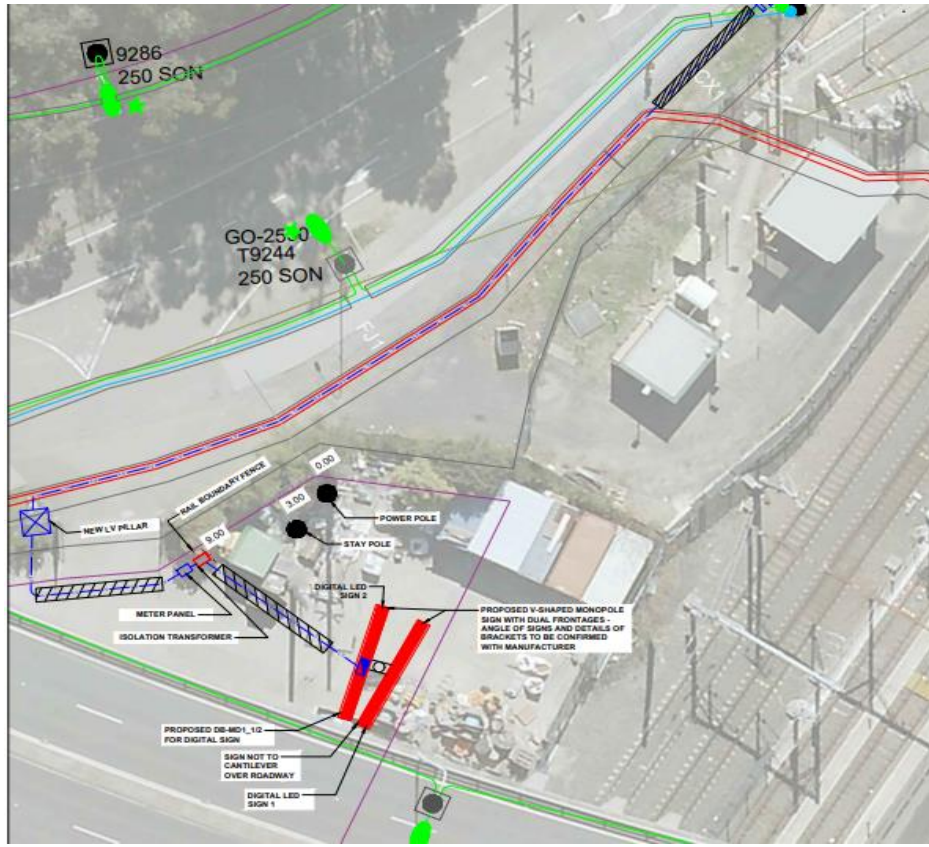
- Lift and access equipment to be setup within yard as per below.



- Lift 1
 - Installation of main column with Head structure (Blue Sections) secured to anchor bolt assembly of new footing
- Lift 2
 - Install support structure wings (Green Sections) to (Blue section) main column head structure, bolted connections
- Lift 3 & 4
 - Sign boxes to (Green Sections) wings, hook and bolted connections, Sign boxes are transported to site as finished items and only require final electrical connection once installed onto the monopole structure



Electrical installation



- Install Polycarbonate meter
- 1 x 60KVA 415v isolation transformer enclosed including earth electrodes
- Underground conduit from supply authority pillar to isolation transformer + sign base 25mm XLPE mains from pillar to isolation transformer

Sign final sub circuit sign panels.

- Install 150mm cable tray along sign frame.
- Install 2.5 orange circular cable to each panel
- Terminate cable at distribution board and sign

Equipment:

- Semi-trailer for Monopole and structure delivery
- Boom lift
- Material Transporting Equipment
- Lifting Equipment
- Hand Tools
- Cordless Power tools

Commence works daily:

- All workers to sign onto Outdoor Fabrications SWMS
- Conduct Pre-start
- Move material, tools, gear and equipment to work zone
- Clean the site from and debris, dust and remove all rubbish
- At the end of works all material, tools, gear and equipment to be removed from site
- Site Supervisor to inspect the site prior to handover ensuring a safe work environment